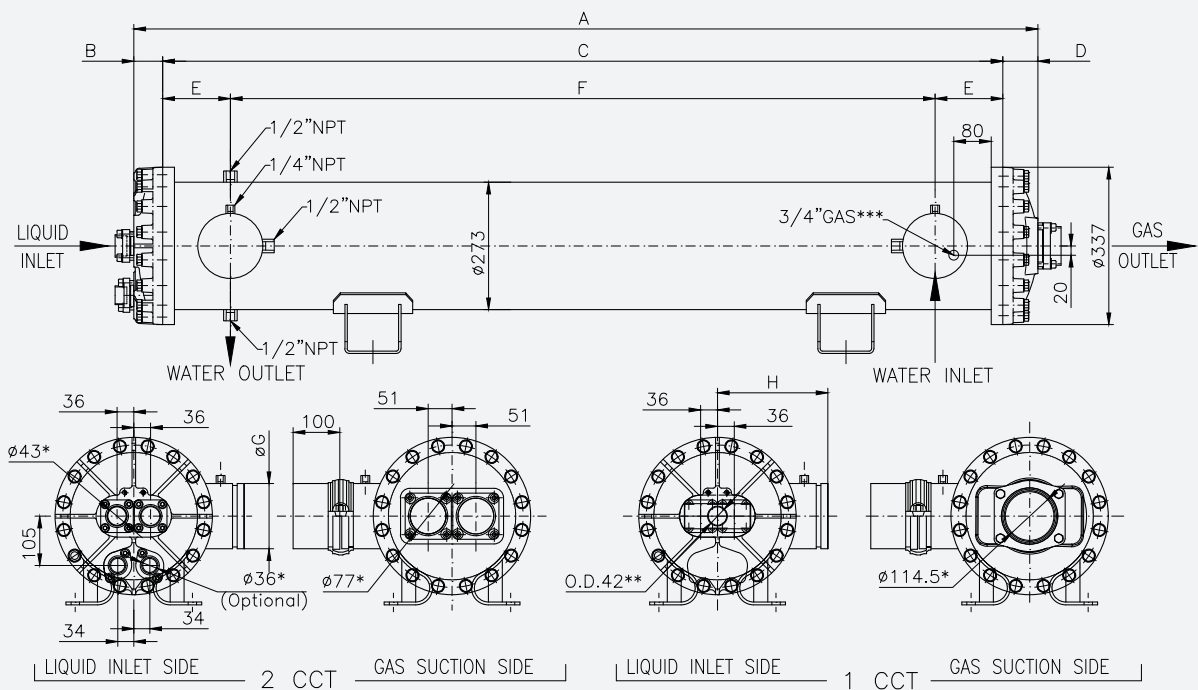


Length [mm]	Number of ranks	Weight [kg]	Water [dm <sup>3</sup> ]	Gas [dm <sup>3</sup> ]	A [mm]	B [mm]	C [mm]	D [mm]	E [mm]	F [mm]	G [mm]	Ø H [mm]	N° CCT
1800	44	209	83	15	1937	62	1800	75	132	1536	114,3	236,5	1CC/2CCT
	55	213	80	18									
	66	217	77	20									
	88	223	70	26									
2175	44	224	101	17	2312	62	2175	75	132	1911	114,3	236,5	1CC/2CCT
	55	230	97	21									
	66	237	93	24									
	88	248	85	31									
2750	44	260	128	21	2887	62	2750	75	132	2486	114,3	236,5	1CC/2CCT
	55	266	123	25									
	66	273	118	29									
	88	286	108	38									
3300	44	284	154	24	3437	62	3300	75	132	3036	114,3	236,5	1CC/2CCT
	55	291	148	29									
	66	300	142	34									
	88	315	130	45									
3600	44	298	168	26	3737	62	3600	75	132	3336	114,3	236,5	1CC/2CCT
	55	305	161	32									
	66	315	155	37									
	88	332	142	49									
3900	44	311	182	28	4037	62	3900	75	132	3636	114,3	236,5	1CC/2CCT
	55	319	175	34									
	66	330	168	40									
	88	349	153	52									

\* Please contact technical dept. at WIELAND PROVIDES S.r.l. for more info



\* INTERNAL DIAMETER OF FERRULE  
 \*\* MANIFOLD (MONO SERIES ONLY)  
 \*\*\* HEAT RESISTANCE-ON THE OTHER SIDE