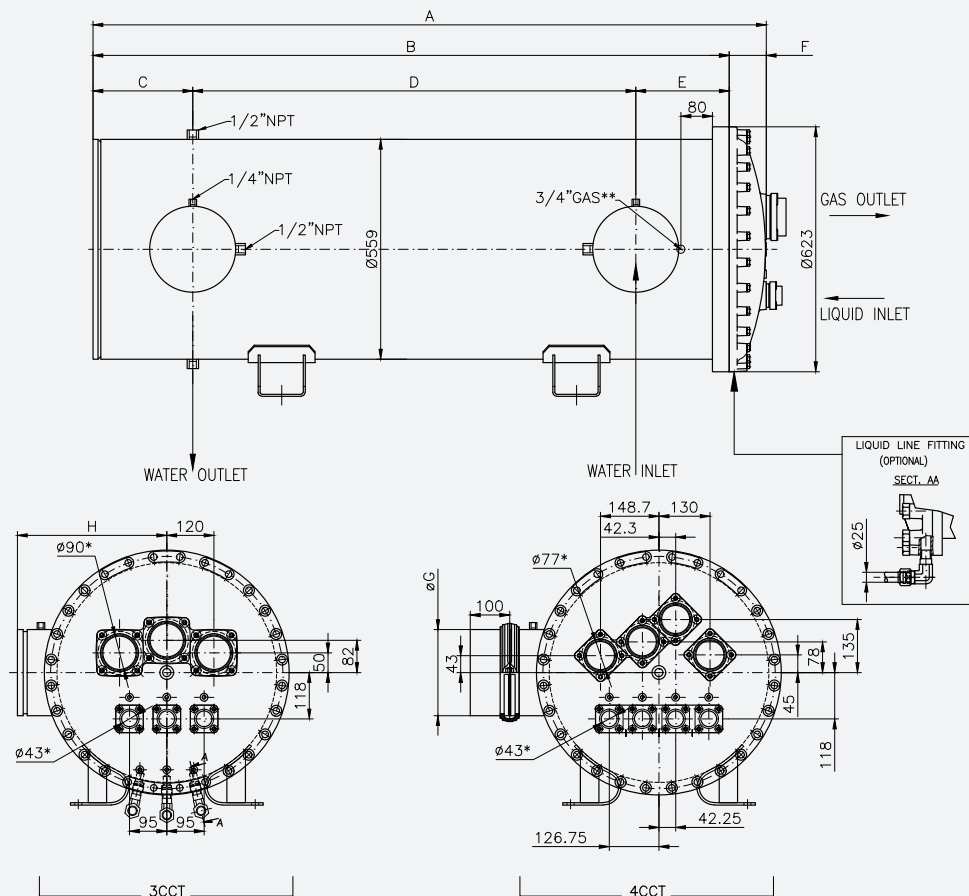


Length [mm]	Number of ranks	Weight [kg]	Water [dm <sup>3</sup> ]	Gas [dm <sup>3</sup> ]	A [mm]	B [mm]	C [mm]	D [mm]	E [mm]	F [mm]	Ø G [mm]	H [mm]	N° CCT
1127	888	462	296	70	1713	1618,5	254	1127	237,5	94,5	219,1	354	3CCT
	999	475	287	77									
	1010	487	278	84									
1967	888	596	454	102	2567	2472,5	268	1967	237,5	94,5	219,1	354	3CCT
	999	616	440	113									
	1010	637	427	124									
1127	6666	462	296	70	1713	1618,5	254	1127	237,5	94,5	219,1	354	4CCT
	6767	471	290	74									
	7777	479	284	79									
	8888	496	272	88									
1967	6666	596	454	102	2567	2472,5	268	1967	237,5	94,5	219,1	354	4CCT
	6767	610	445	110									
	7777	624	436	117									
	8888	652	418	131									

\* Please contact technical dept. at WIELAND PROVIDES S.r.l. for more info



\* INTERNAL DIAMETER OF FERRULE  
\*\* HEAT RESISTANCE-ON THE OTHER SIDE